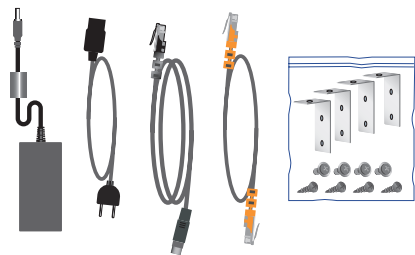
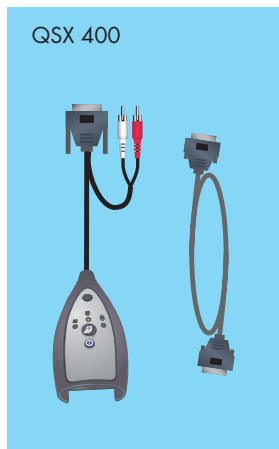


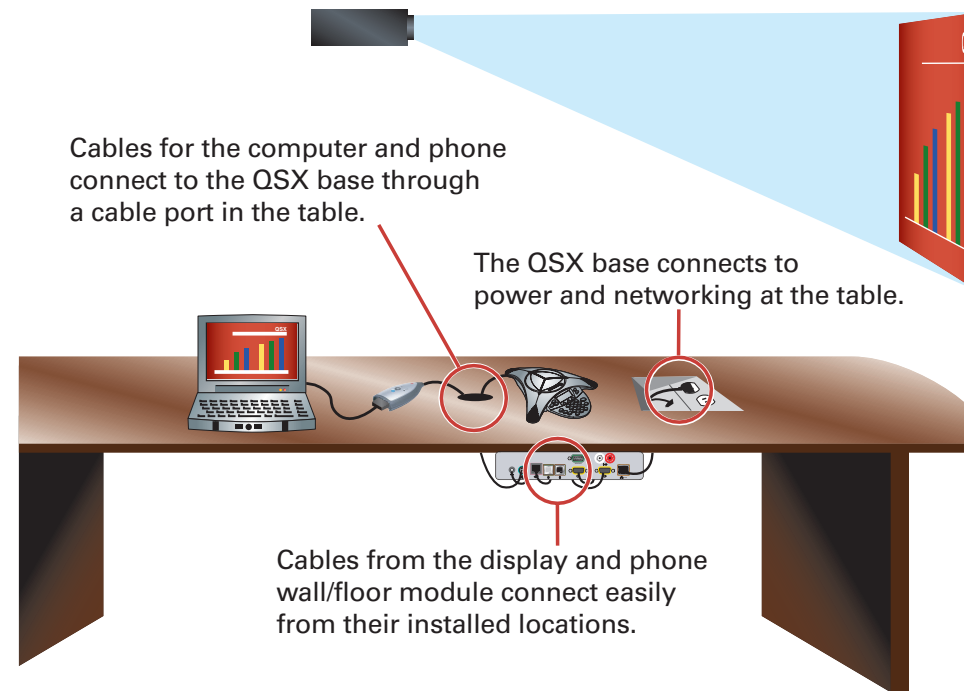
# Setting up the QSX™ System

## What's in the box?



## 1 Decide where to place the QSX system

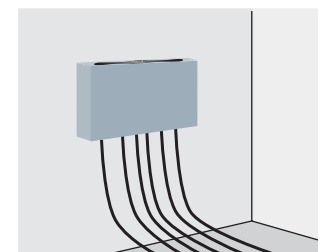
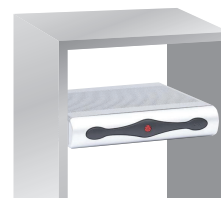
Make sure that the location you choose allows all of the cables to connect easily to the QSX base. The following diagram shows a typical installation.



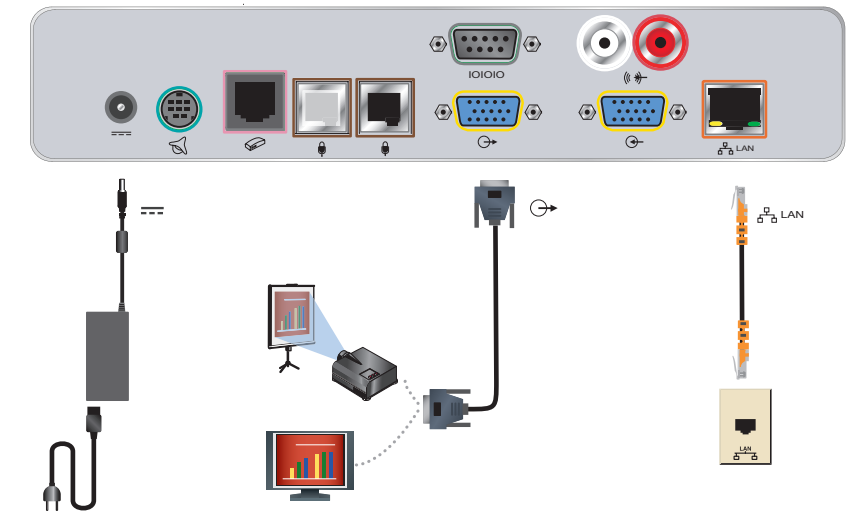
## 2 Mount the system with brackets (optional)



Other mounting options



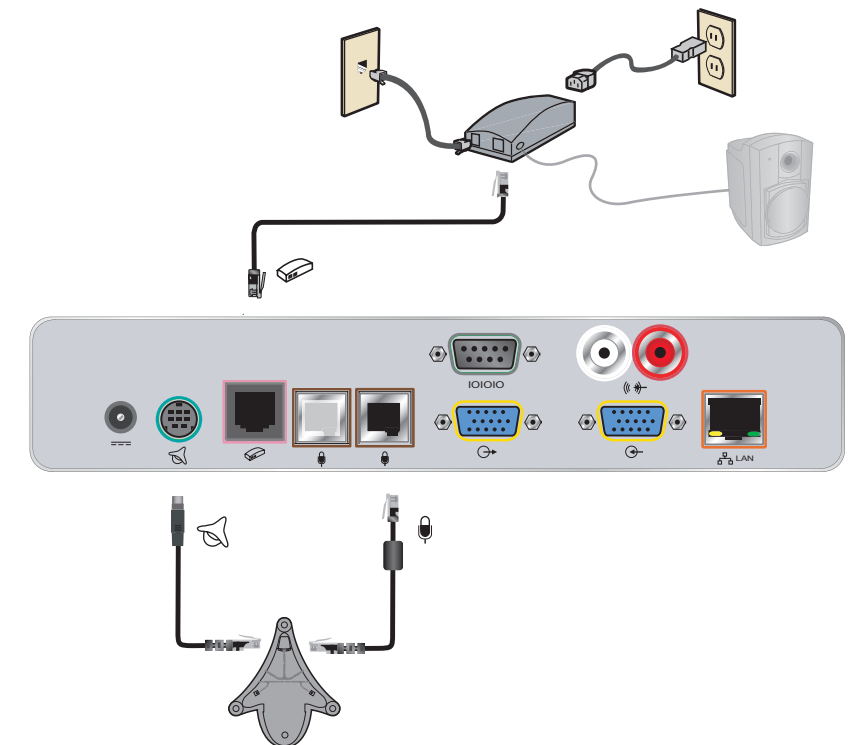
## 3 Connect power, a display, and the network



The QSX default network setting is DHCP. For more information, see the Administrator's Guide.

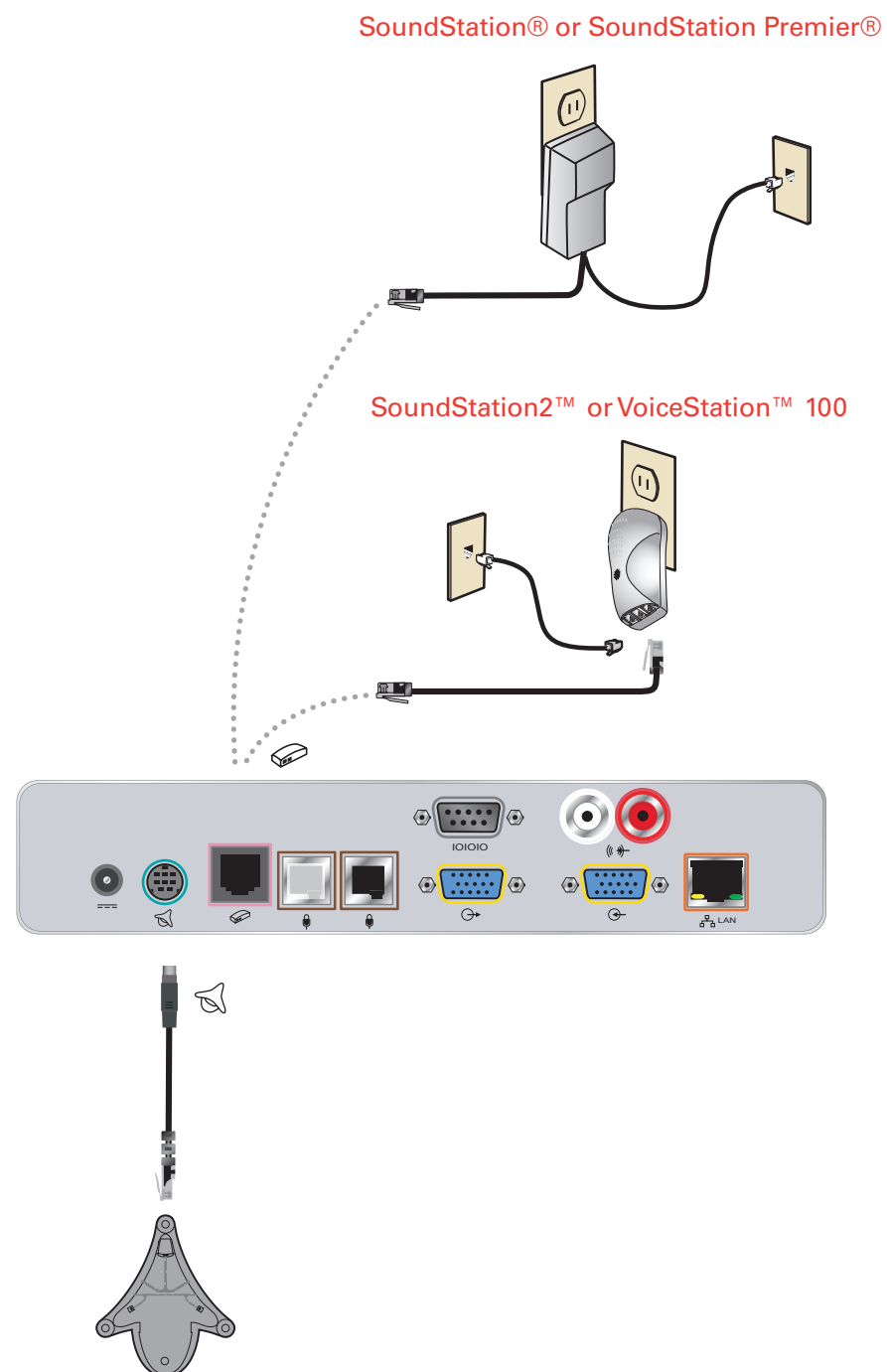
## 4 Connect a conference phone

Connect a SoundStation VTX 1000 conference phone

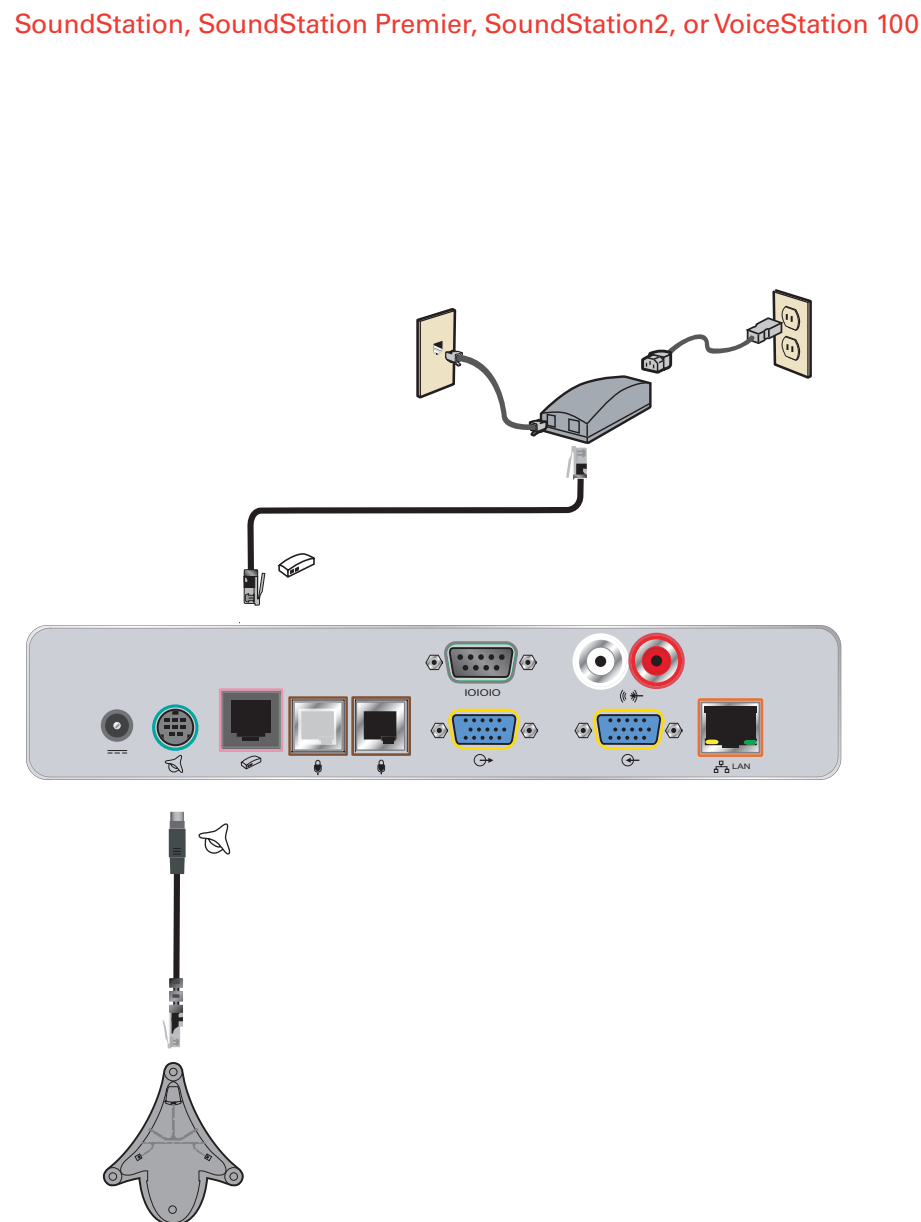


You may need to upgrade your SoundStation VTX 1000 software. For version information, see the Release Notes available at [www.polycom.com/resource\\_center](http://www.polycom.com/resource_center).

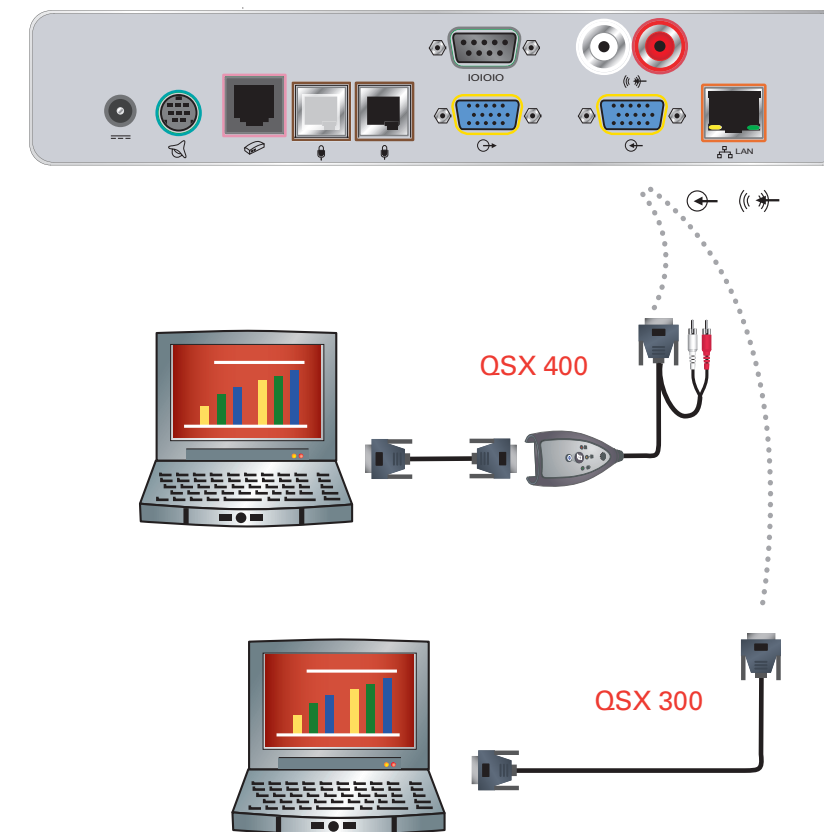
Connect other analog conference phones (100V-120V)



Connect other analog conference phones (220V-240V)



5 Connect a computer



Your QSX system is now ready for use.

For more information

For information about configuring the QSX system, see the *QSX System Administrator's Guide*.

For information about using the QSX system, see the *Quick Tips for QSX Systems*.

For the latest product information, see the Release Notes available at [www.polycom.com/resource\\_center](http://www.polycom.com/resource_center).

For product support, visit the Polycom Support Center at [www.polycom.com/support](http://www.polycom.com/support).

